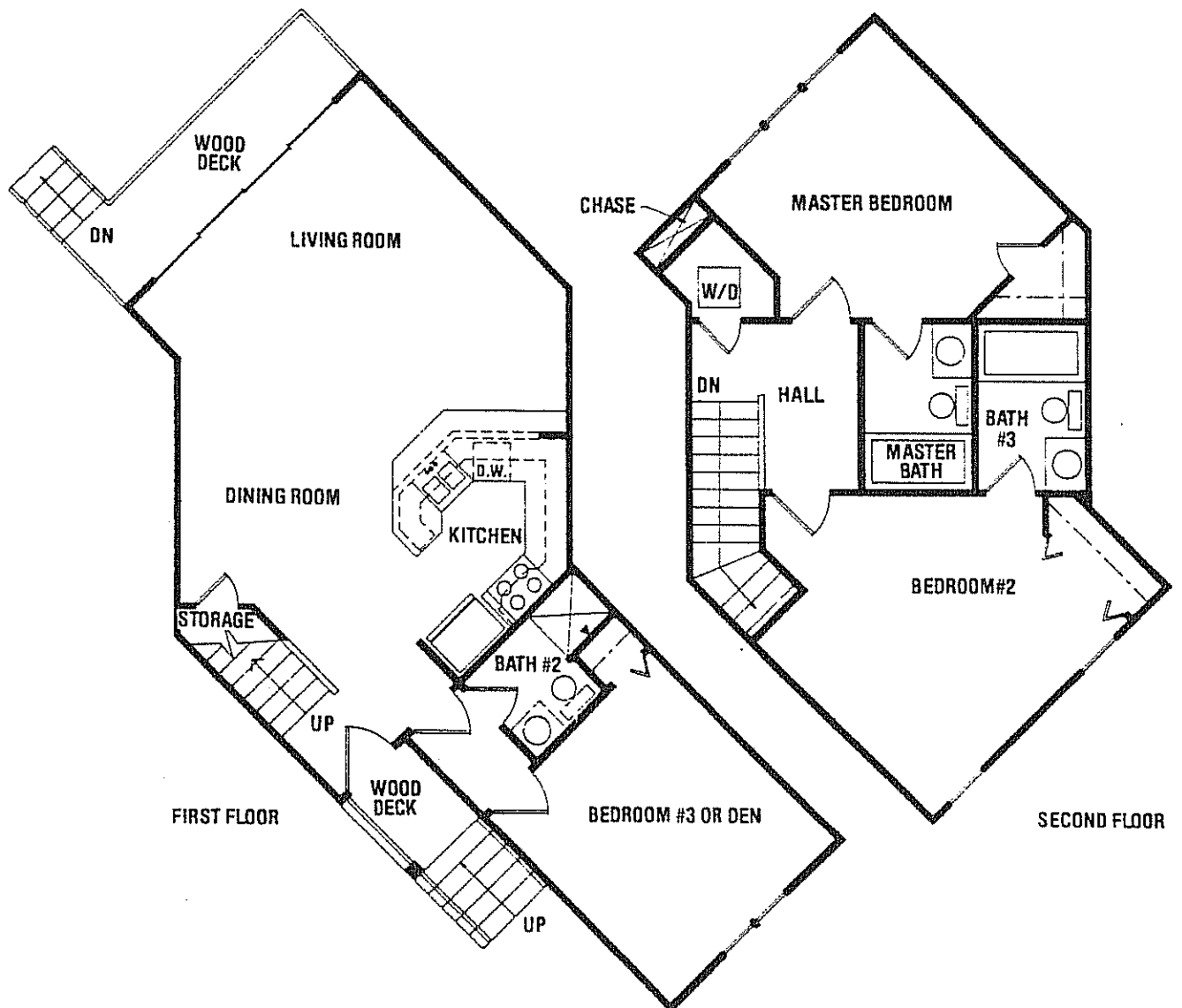


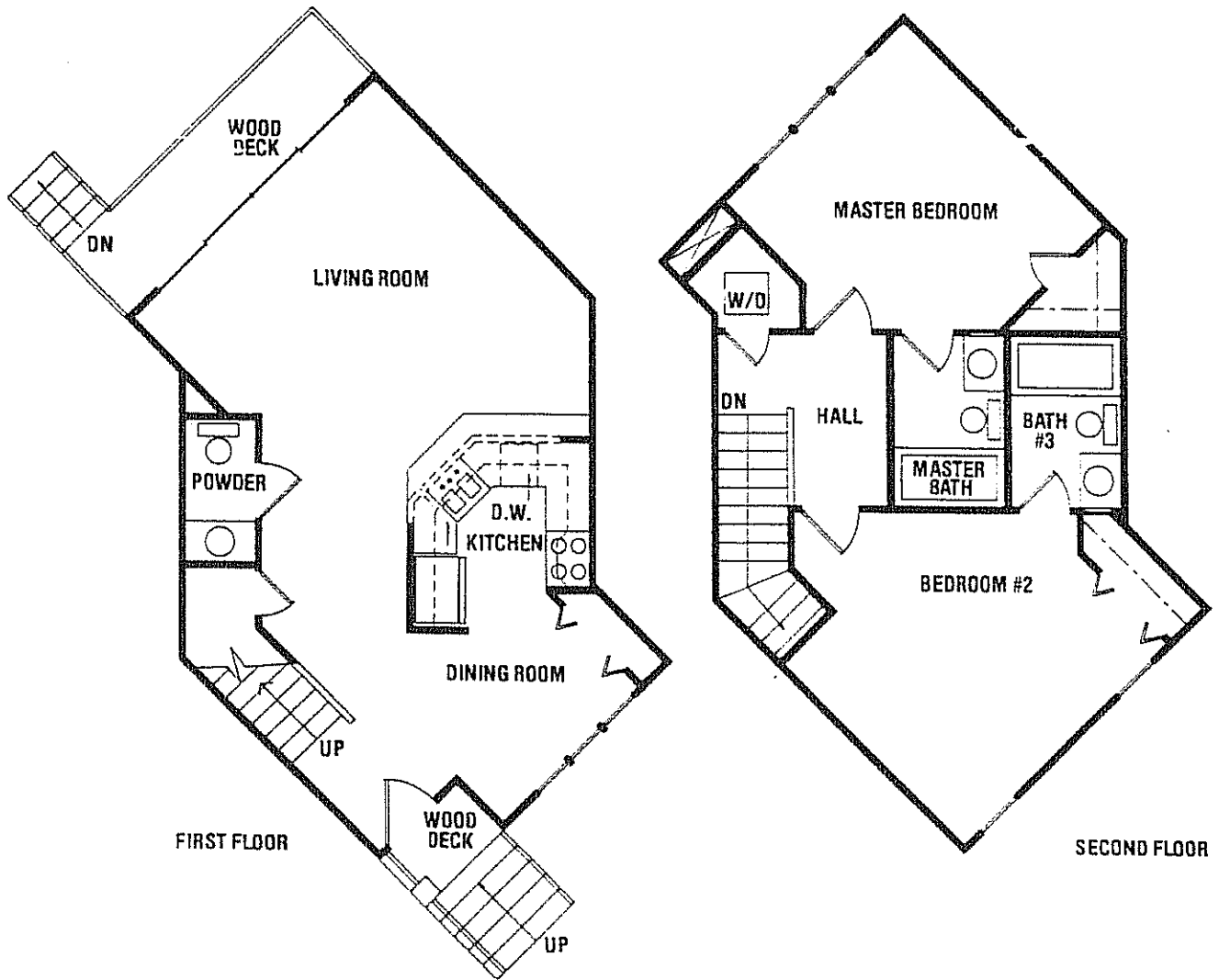
# The Dogwood

Your family will love this three bedroom floor plan. The spacious master bedroom includes a private bath and plenty of closet space. The kitchen opens up to both dining and living areas. The first floor powder room is definitely an advantage. The generous use of glass throughout your new home brings the warm Carolina sun inside, creating a warm comfortable atmosphere.



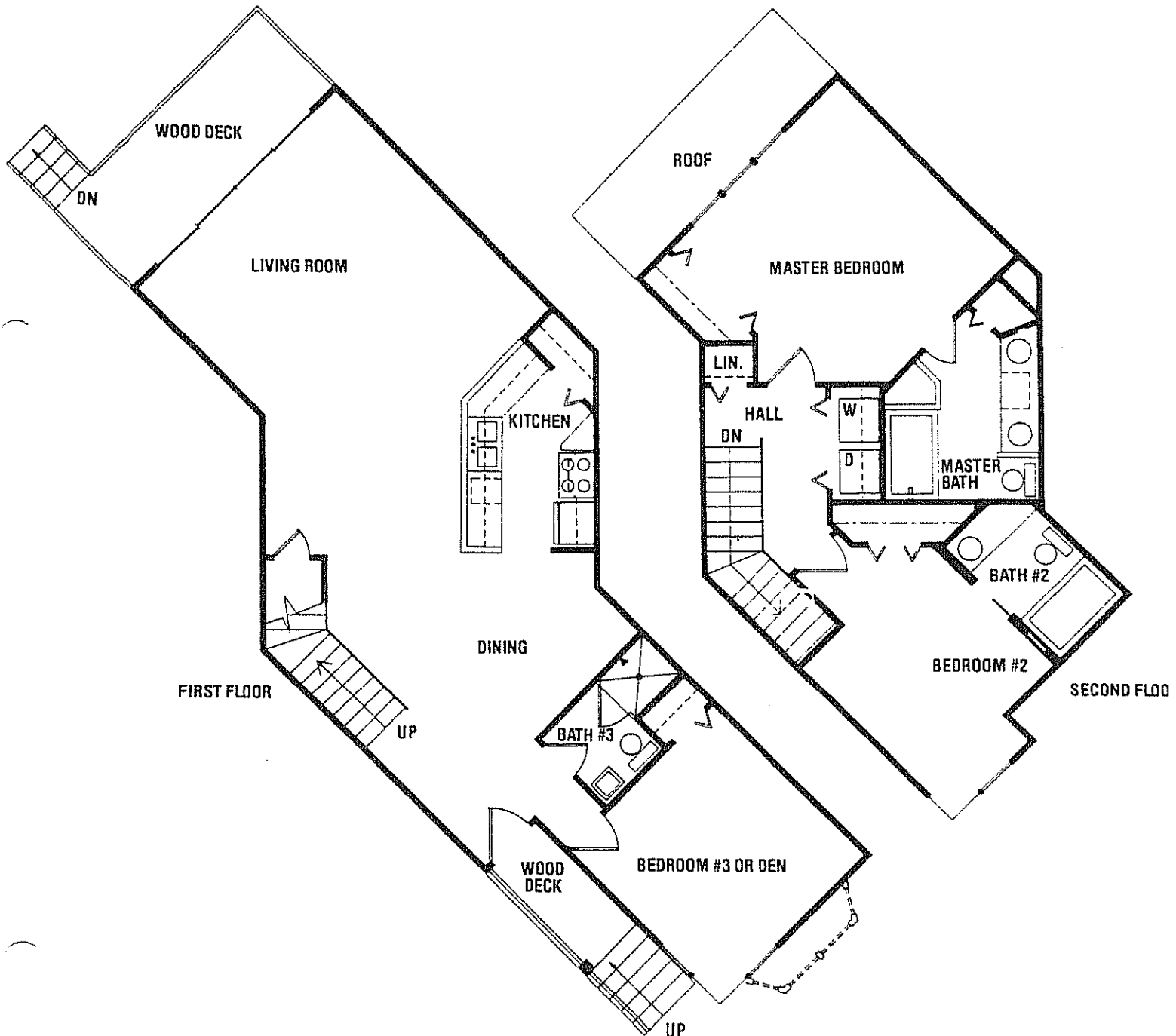
# The Live Oak

This two bedroom Townhome of Ocean Breeze includes a living room wall with floor to ceiling glass! Because of the creative "Z" design, the first floor is open from the front door to your private balcony, adding a true sense of spaciousness. Fully equipped kitchens, open to both dining room and living room, make preparation and serving a pleasure. A full-size master bedroom is a true luxury of space and the cozy guest room includes its own bath.



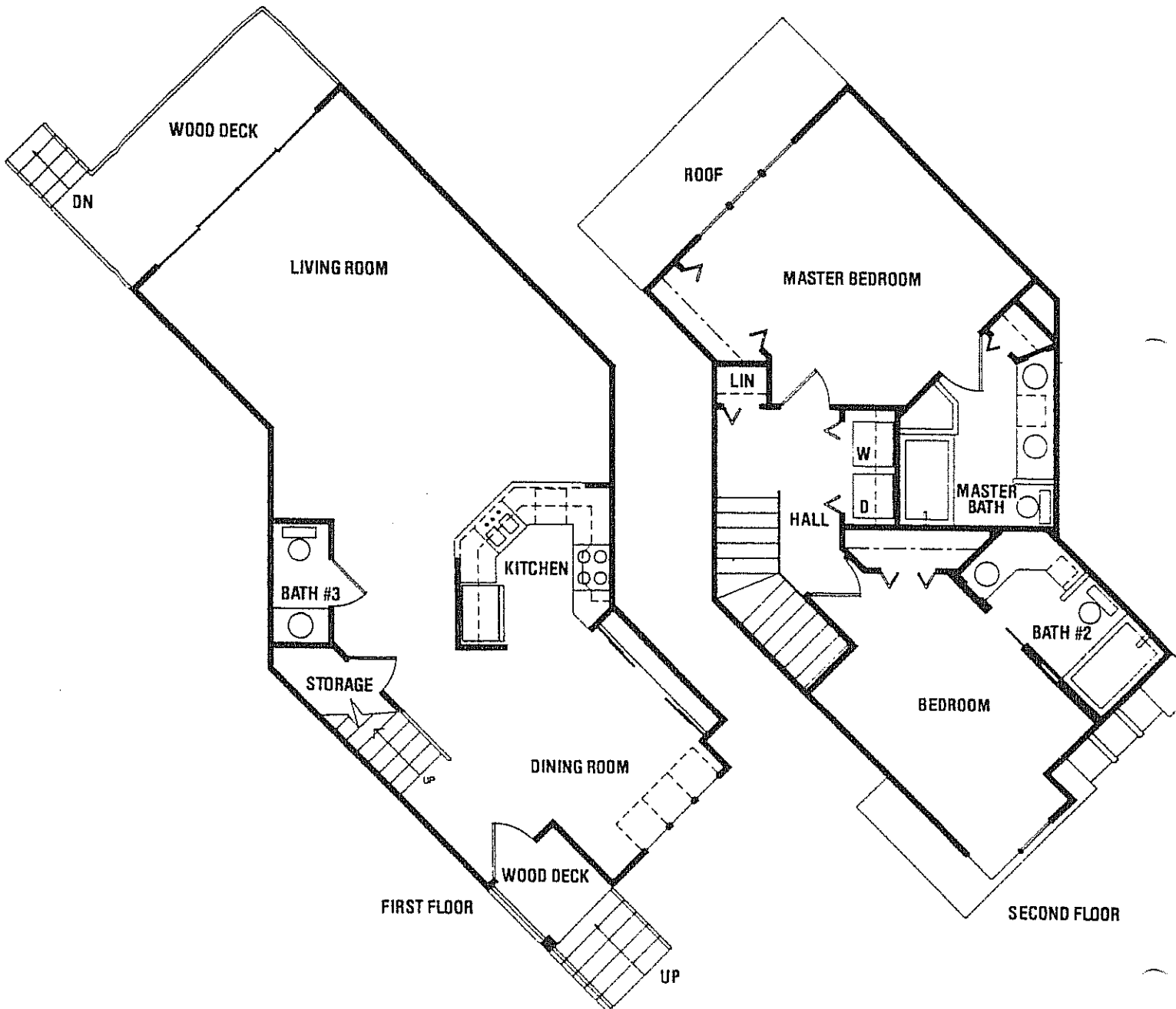
# The Magnolia

Make the first floor bedroom of the three bedroom Magnolia into a den, if you'd like, and enjoy the special character the bay window adds. Open and bright are the key words to this spacious plan that features three full baths. A private balcony and private entrance make the Magnolia seem to stand alone in this delightful community.



# The Palmetto

The floor to ceiling "greenhouse" window in the two bedroom Palmetto isn't just a delightful accent, it's a statement of your personal taste. Imagine the sun gleaming in through your plants as you enjoy a perfect meal in your intimate dining room. A spacious living room opens out onto your private deck, creating a very free feeling with its special "Z" design. The first floor guest bath is an added plus.



# The Townhomes of Ocean Breeze

## Features

### Exterior Features

- Siding Rough sawn cedar or cypress.
- Windows Double hung with insulated glass (end townhomes have additional windows in exterior wall).
- Doors Exterior Front Door-insulated steel six-panel.  
Patio Doors-sliding bronze aluminum with insulated glass.

### Interior Features

- Doors Colonial six-panel molded doors with colonial trim for swinging and bifolds (pocket doors in specified locations).
- Flooring Vinyl (standard as selected by College Investments) to be installed in kitchen, baths and utility areas. Vinyl may be installed in entry, at no charge.
- Carpet Standard as selected by College Investments.
- Kitchen Cabinets-laminate/oak accented contemporary cabinets with brass hardware and laminated plastic almond countertops.  
Sink-double bowl stainless steel/Moen or equal single lever faucet.  
Appliances-  
Standard (almond color)  
Dishwasher-GE model #GSD 600G  
Garbage Disposal-GE model #GFC 410  
Refrigerator-GE model #TBX18A w/ice maker  
Range-GE model #JBP24G  
Range Hood-GE model #JN322
- Plumbing Cultured marble vanity tops with molded bowl.  
Single lever Moen or equal faucet.  
Tub-one piece fiberglass tub/shower combination with shower rod.  
Single lever Moen or equal value with shower.  
Water Closet-Mansfield or equal in white.

### Electrical

- Lighting Baths-Hollywood lighting strip.  
Dining Room-chandelier #P4085.  
Kitchen-flush mount 48" fluorescent fixture.  
Entry and stairwell areas-recessed lighting.  
NOTE: Living room and bedroom are pre-wired with switches for ceiling fans (fans are not standard items).
- Mirrors Standard at all vanities.
- Attic Storage Pull-down stairs to attic area.
- Heating & Air Cond. Electric heat pump and central air conditioning unit, sized to specifications required by manufacturer.

Developer reserves right to substitute products of equal value.

**Z10-238G**