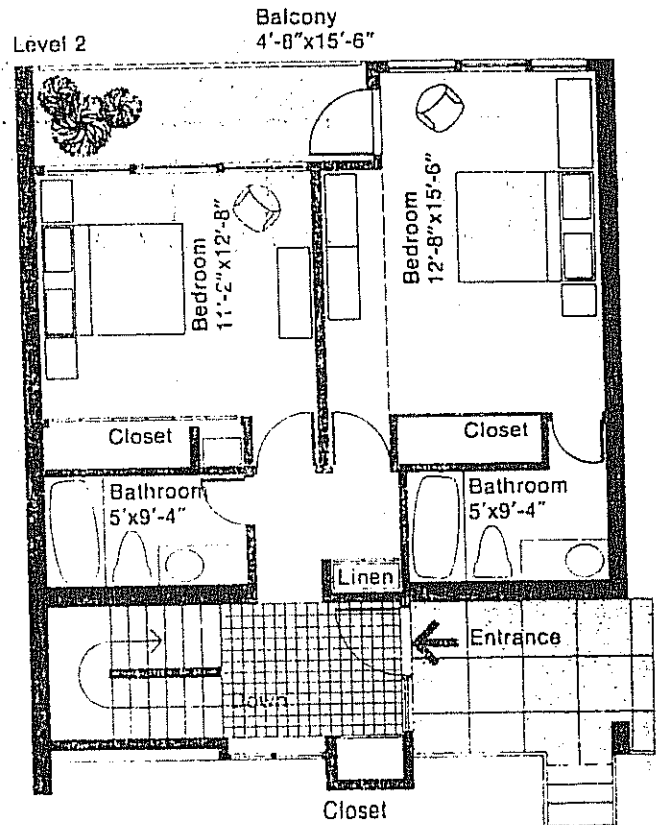
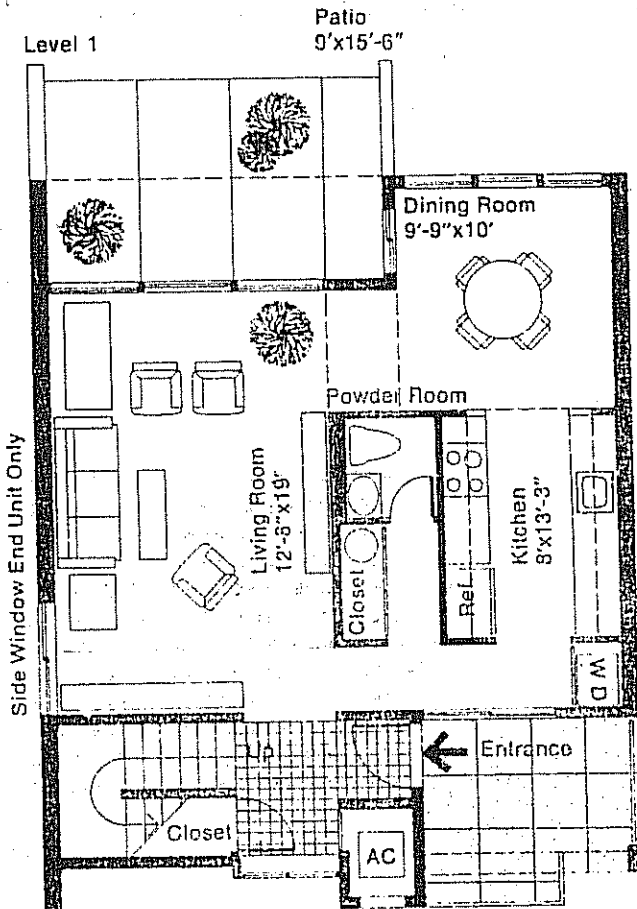


A. Patio/2 Bedroom/2 1/2 baths AP

The residences of TREETOPS

Two entries are provided, both with quarry tiled foyers at each end of the internal staircase. On the forest floor level a fenced yard provides privacy and outdoor storage space. The upper entry is reached by descending a half flight of steps from the elevated walkway. Each bedroom has its own bath and access to the balcony. Living rooms open onto patios or wooden decks, depending on grade conditions. Powder room has screened entry.



(All dimensions approximate. Plans subject to change.)

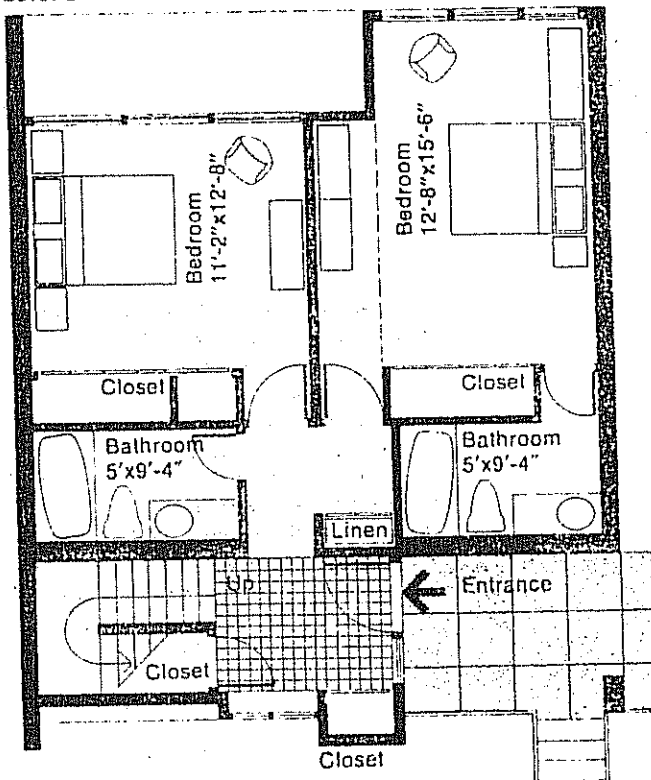
A. Clerestory/2 Bedroom/2 1/2 baths

AC

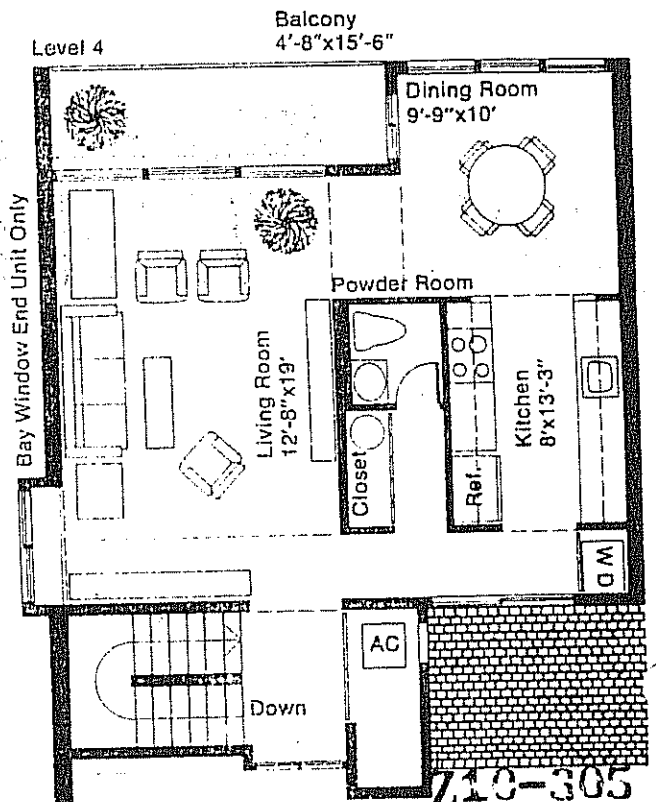
The residences of **TREETOPS**

Entry is one-half flight above the elevated walkway via a private roofed entryway. There you enter a foyer finished in quarry tile. Enter the bedrooms at this level or ascend an internal stairway to the living area. Here the sixteen foot high pitched ceiling leads the eye to a row of horizontal clerestory windows which fill the room with shafts of gentle light filtered through the treetops.

Level 3



Level 4



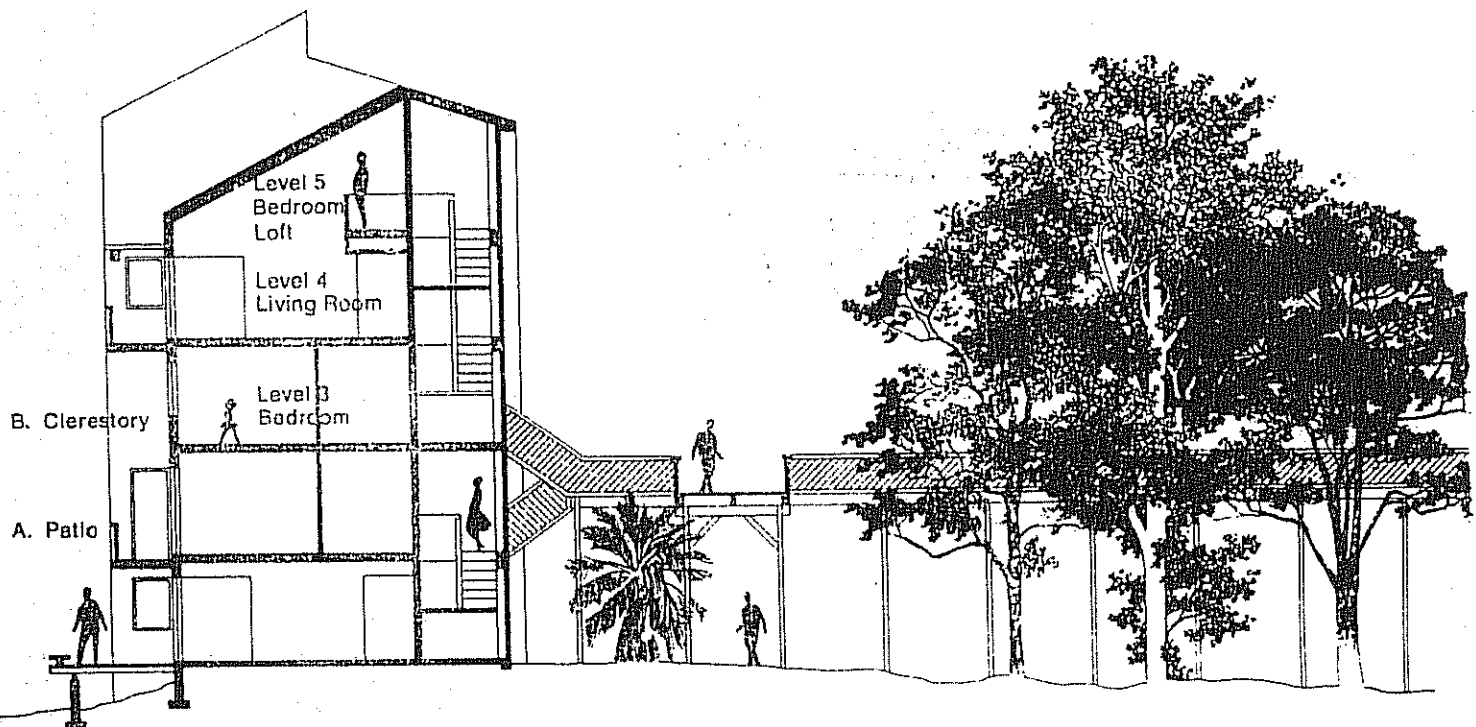
(All dimensions approximate. Plans

B. Clerestory/3 Bedroom/2 1/2 baths

B

The residences of **TREETOPS**

Entry is one-half flight above the elevated walkway via a private roofed entryway. There you enter a foyer finished in a quarry tile. Ascend from the bedroom level to the living room. Above the balcony is a naturally-finished wood trellis for hanging plants. Take the stairs one level higher to a loft area and a third full bedroom with its full bath, pitched ceiling and clerestory windows at treetop level.



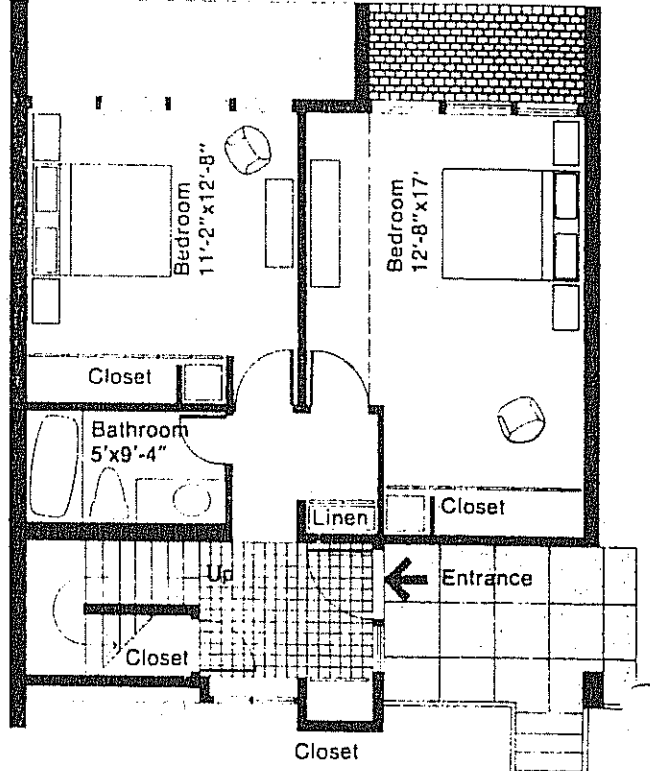
Z13-306

(All dimensions approximate. Plans subject to change.)

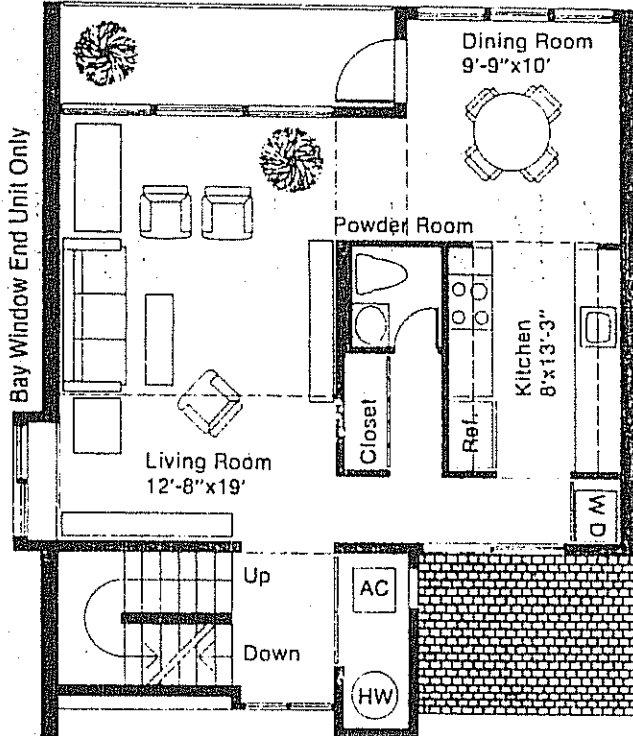
B.Clerestory/3 Bedroom/2 1/2 baths

The residences of **TREETOPS**

Level 3

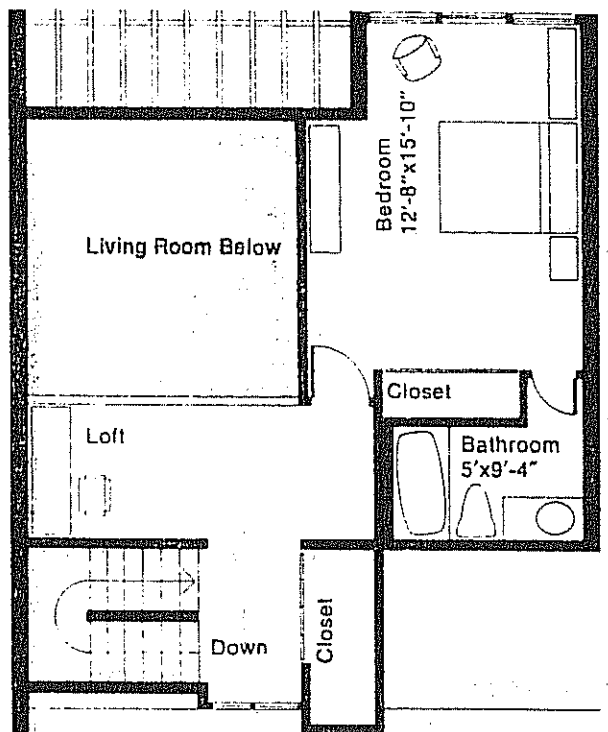


Level 4
Balcony 4'-8" x 15'-6"



Level 5

Trellis



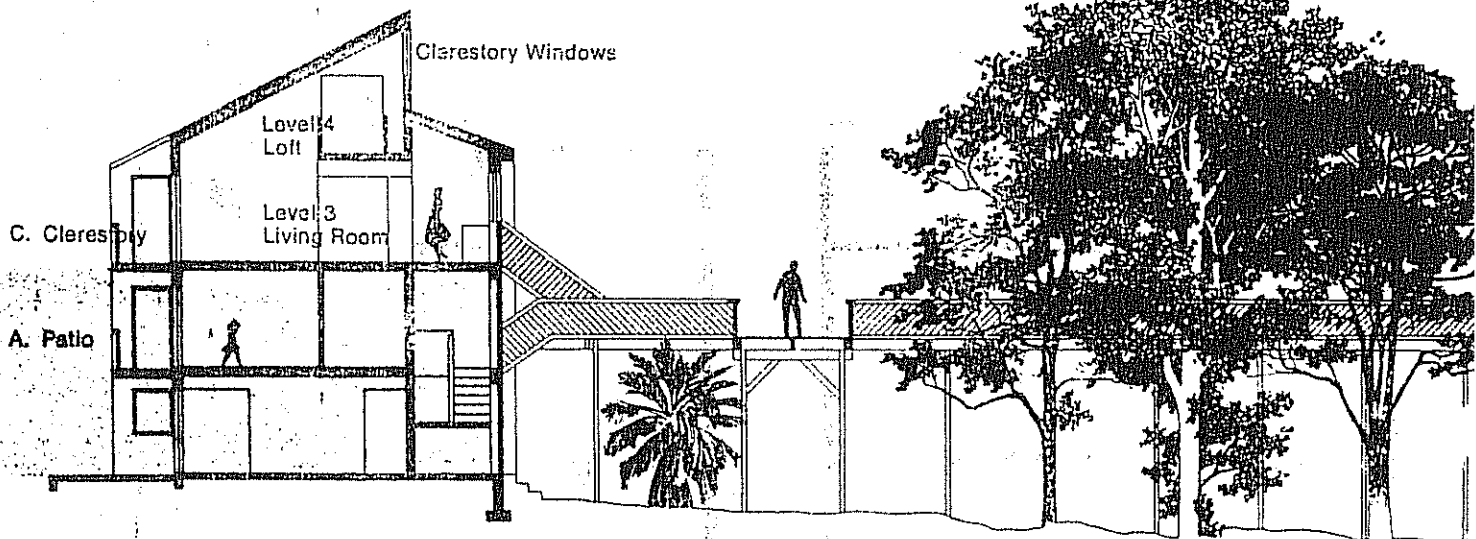
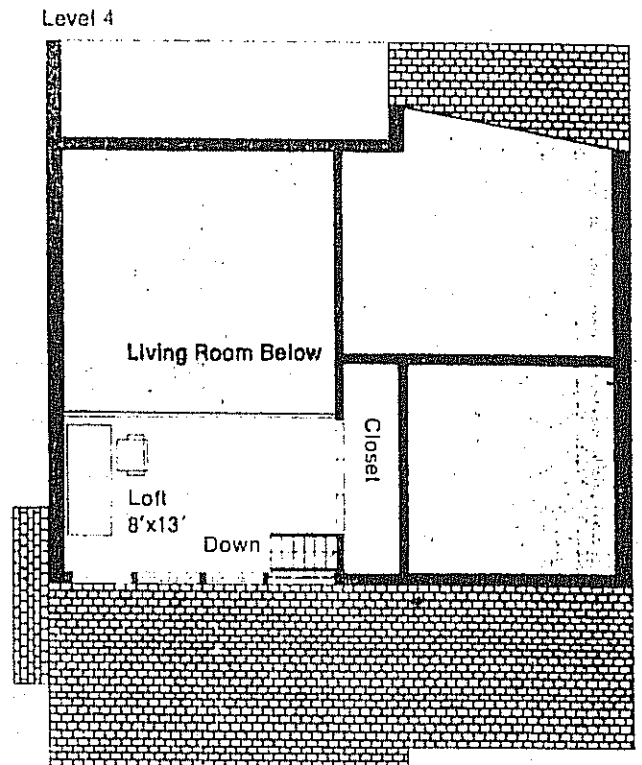
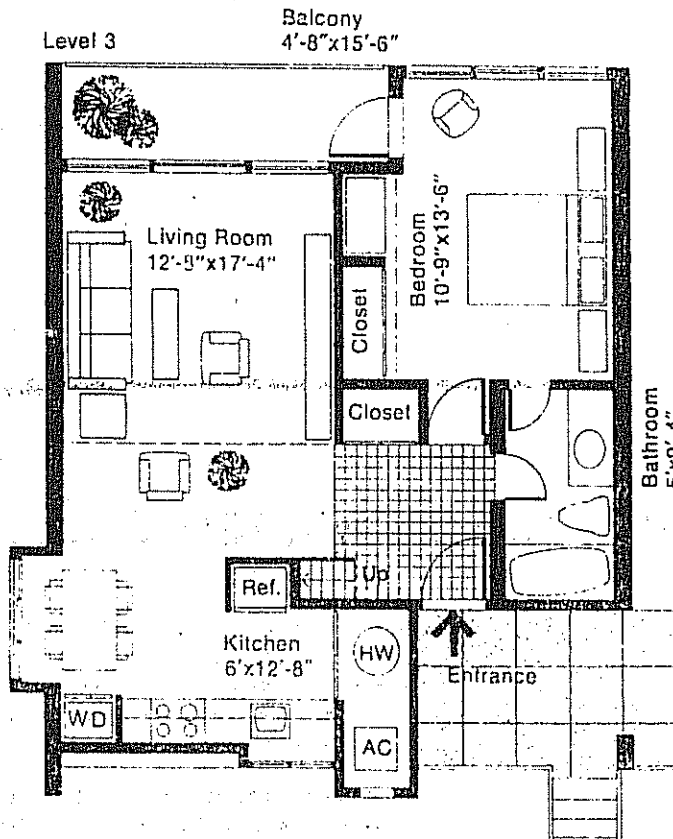
719-307

(All dimensions approximate. Plans subject to change.)

C. Clerestory/1 Bedroom/1 Bath

Enter one-half flight above the elevated walkway. Spaciousness and light are emphasized by the pitched ceiling ending in treetop level clerestory windows. An 8'x13' loft area provides space for a study or children's play/sleep area and the bathroom has entry from the foyer or bedroom. Kitchens have windows over the sink and a bay-windowed dining alcove.

The residences of TREETOPS



(All dimensions approximate. Plans subject to change.)